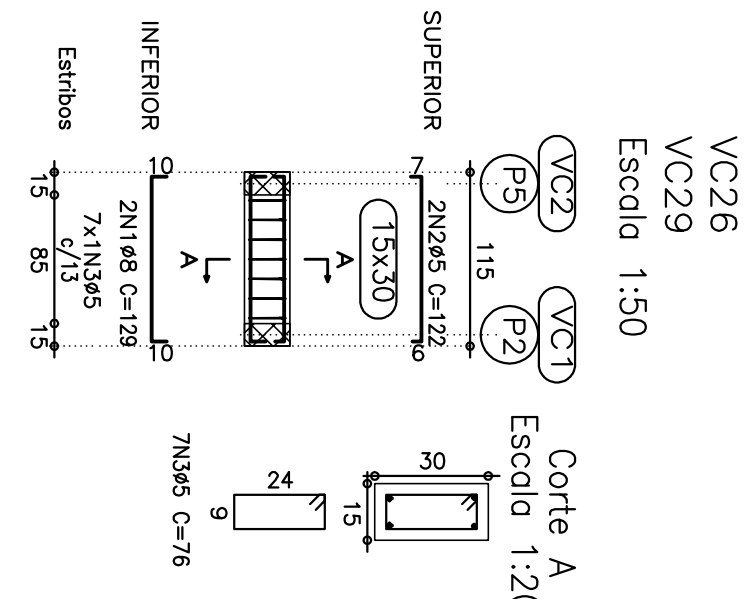
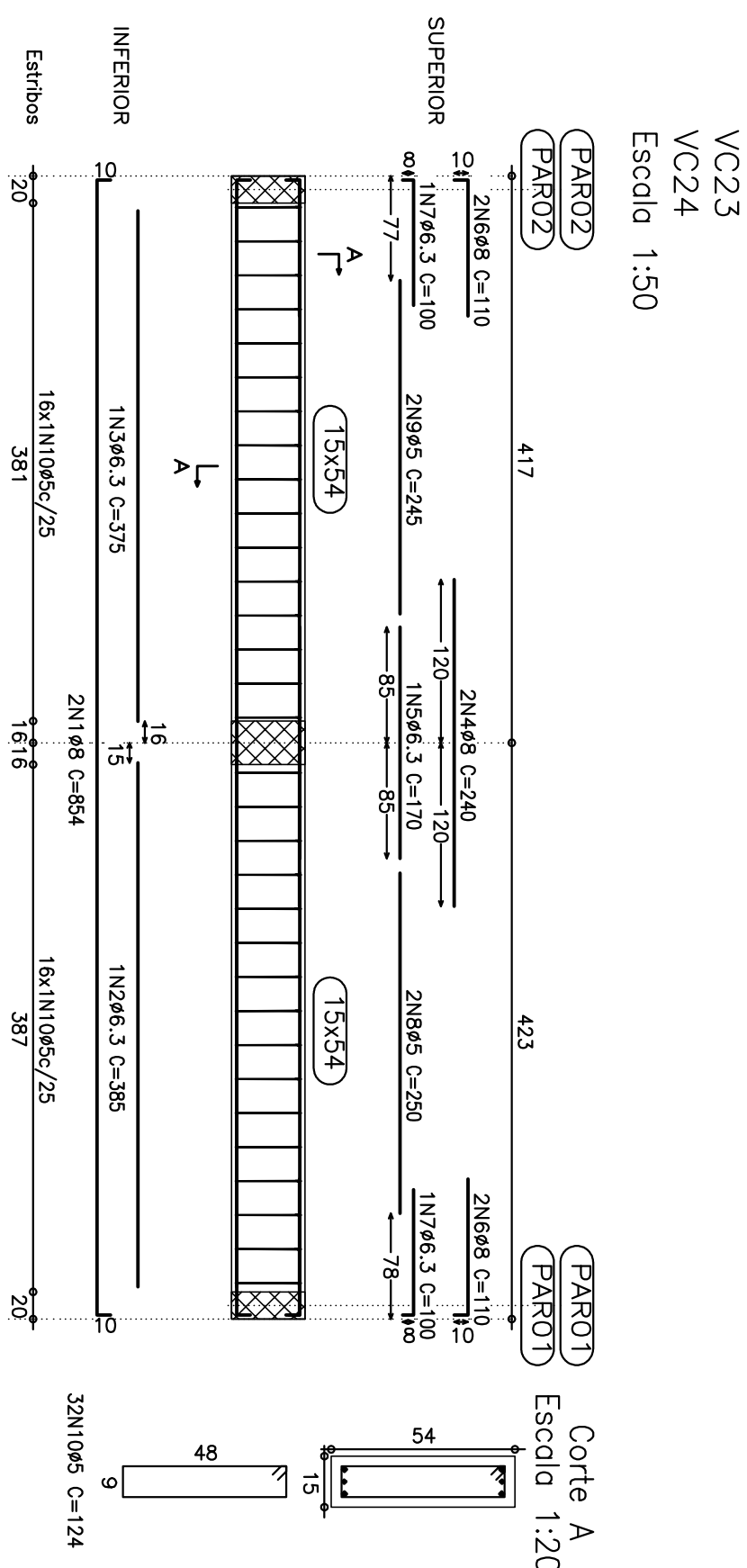
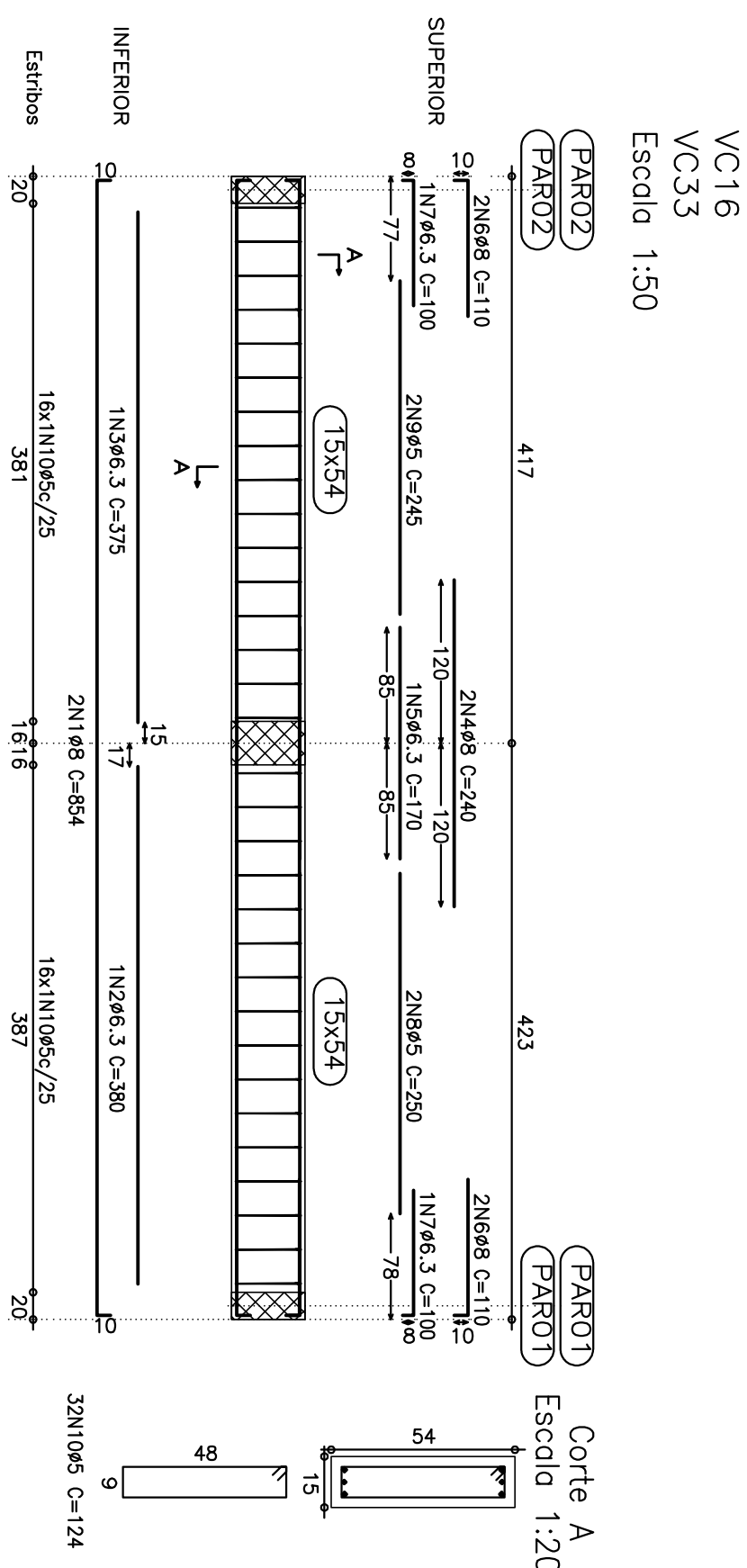


Elemento	Pos	Diam	Obj	Ret	Obj	Comp	Total	CA-50	CA-60	B-B
VC1=WC2	1	68.3	2	9	116	10	220	400	1.6	
	2	68.3	2	9	116	10	220	250	0.6	
	3	68.3	2	10	270		280	560	2.2	
	4	65	18				76	1368		2.1
VC3=VC6=VC14	1	68.3	2	10	352	10	512	12.6	4.5	
	2	68.3	4	10	135		145	580	2.3	
	3	68.3	2	8	122		130	260	0.6	
	4	65	2		370		370	740		1.2
	5	65	2.5				124	2852		4.5
	6	65								4.5
VC5=VC6=VC7=VC9	1	68.3	2	10	550	10	530	335	0.6	
	2	68.3	4	10	335		350	335	0.6	
	3	68.3	4	10	350		140	560	2.2	
	4	65	2		350		72	700		1.1
	5	65	4.5							5.1
VC9	Total+10% (x2)									
	Total+10% (x2)									
VC16=VC33	1	68.3	2	10	834	10	854	1768	6.4	
	2	68.3	2	10	380		350	370	0.7	
	3	68.3	2	10	240		240	480	1.9	
	4	68.3	2	10	240		480	1.9		
	5	66.3	1	170	170		170	170	0.4	
	6	68.3	2	100	100		110	440	1.7	
	7	68.3	2	100	100		100	200	0.5	
	8	68.3	2	100	100		100	200	0.5	
	9	65	2	252	252		245	490		0.8
	10	65	32		245		124	3968		6.2
VC17=VC22=VC25	Total+10% (x2)									
	Total+10% (x2)									
VC32	1	68.3	2	10	792	10	812	1624	6.4	
	2	68.3	2	10	280		290	580	2.3	
	3	68.3	2	10	279		285	570	0.4	
	4	65	2		274	6	280	560		0.9
	5	65	2				280	560		0.9
	6	65	62				72	4464		7.0
VC18=VC19=VC20	Total+10% (x2)									
	Total+10% (x2)									
VC21=VC28	1	68	2	10	34	10	54	108	0.4	
	2	68	2	10	34	10	54	108	0.4	
	3	65	2	6	34	6	76	76	0.1	
VC23=VC24	Total+10% (x2)									
	Total+10% (x2)									
VC26=VC29	1	68	2	10	834	10	854	1768	6.2	
	2	66.3	1	1	385		385	385	1.0	
	3	66.3	2	1	375		375	375	0.9	
	4	68.3	2	1	240		240	480	0.9	
	5	68.3	2	1	240		240	480	0.9	
	6	68.3	4	100	10		110	440	1.7	
	7	66.3	2	92	8		100	200	0.5	
	8	65	2	2	250		250	500		0.8
	9	65	2	2	245		245	490		0.8
	10	65	32				124	3968		6.2
VC28=VC29	Total+10% (x2)									
	Total+10% (x2)									
VC32=VC33	1	68	2	10	109	10	129	258	1.0	
	2	65	7	7	109	6	72	244	0.4	
	3	65	7	7			122	532		0.8
VC34=VC35	Total+10% (x2)									
	Total+10% (x2)									
VC36=VC37	Total+10% (x2)									
	Total+10% (x2)									
VC38=VC39	Total+10% (x2)									
	Total+10% (x2)									
VC40=VC41	Total+10% (x2)									
	Total+10% (x2)									
VC42=VC43	Total+10% (x2)									
	Total+10% (x2)									



LEGENDA

NOTASARTICULAÇÃO:REVISÕES

OBJETO: PROJETO BÁSICO DO SISTEMA DE ESGOTAMENTO SANITÁRIO DE UMBURANAS - BA

PROJETO ESTRUTURAL - DATA  
VIGAS - FORMAS - 2ª PARTE

ENG. JOSÉ MENESCAL NETO	CREA 2066/D - CE	data	MARÇO/2009
ENR	2007	CD/2006	2007/03/24

ENG.	CREA	INDICADA
ENG.	CREA	07-UMB-P9-EST-DAF-A-R0